

Multifunctional through hole DIP switches

Features

Optimized Mechanical Features

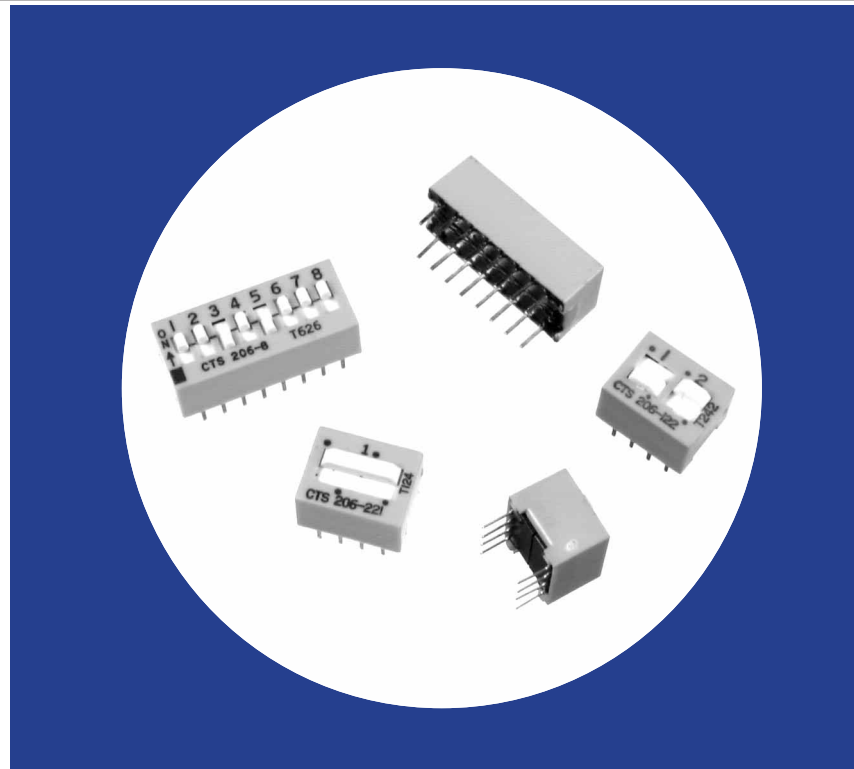
- Series 206 SPST, SPDT, DPST, DPDT, 3PST or 4PST circuitry choices
- Series 206 and Series 208 SPST available in 2 through 10 and 12 positions
- Standard 2.54mm (.100") x 7.62mm (.300") DIP centers
- Available with flush actuators for low profile SPST applications
- Sealed version optional; assures contaminant-free switch operation after flow soldering and cleaning

Optimized Contact System

- Contact wiping on make and break
- Integral terminal and contact locked into thermoset base
- Electrostatic discharge shield rated to 22 KV

Materials

- Series 206 gold-plated contacts for long-term contact corrosion resistance
- Series 208 tin-lead contacts
- All U.L. 94 V-0 plastics used



Series 206 – Premium Gold Plated Contacts
Series 208 – Economical Tin-Lead Plated Contacts

Electrical and Mechanical Specifications

Switch Function

- Series 206 and 208 single pole single throw
- Series 206 - single pole double throw
- double pole single throw
 - double pole double throw
 - 3 pole single throw
 - 4 pole single throw

Switch Contact Resistance

| Switch Series | Initial, max. | End of life, max. |
|---------------|---------------|-------------------|
| 206 | 50 milliohms | 100 milliohms |
| 208 | 100 milliohms | 500 milliohms |

Insulation Resistance

- 1,000 megohms minimum across open switch
- 1,000 megohms minimum between adjacent closed switches

Dielectric Strength

- 500 VAC minimum for 1 minute between adjacent switches

Nonswitching Rating

- 100 mA or 50 VDC

Switch Capacitance

- 5.0 pF maximum between adjacent switches

Operating Temperature

- 55°C to +85°C

Actuation Life

- Series 206: 10,000 cycles switching
50 mA @ 24 VDC
- Series 208: 2,000 cycles switching
50 mA @ 15 VDC

Allowable Solder Time

- Up to 4 seconds with 260°C solder

Vibration

- Per MIL-STD-202F, method 204D, condition B with no contact inconsistencies greater than 1 microsecond

Shock

- Per MIL-STD-202F, method 213B, condition A with no contact inconsistencies greater than 1 microsecond

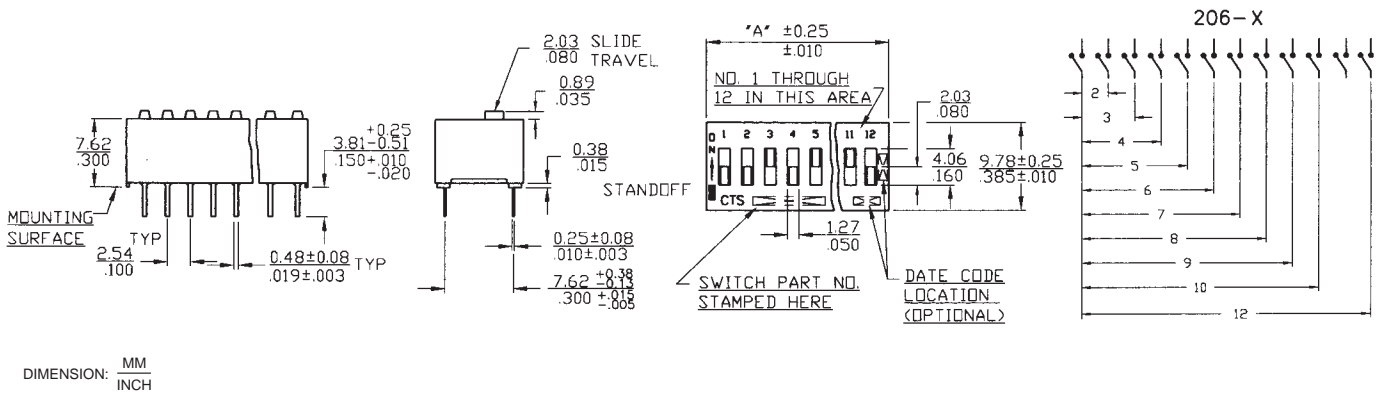
Sealing

- Bottom epoxy seal optional
Top tape seal optional

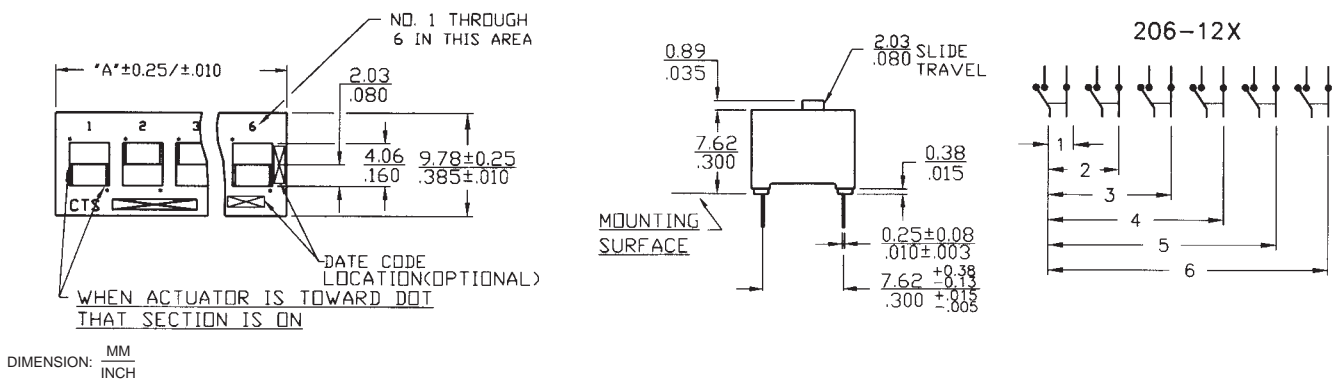
Marking

- Special side or top marking available-consult CTS

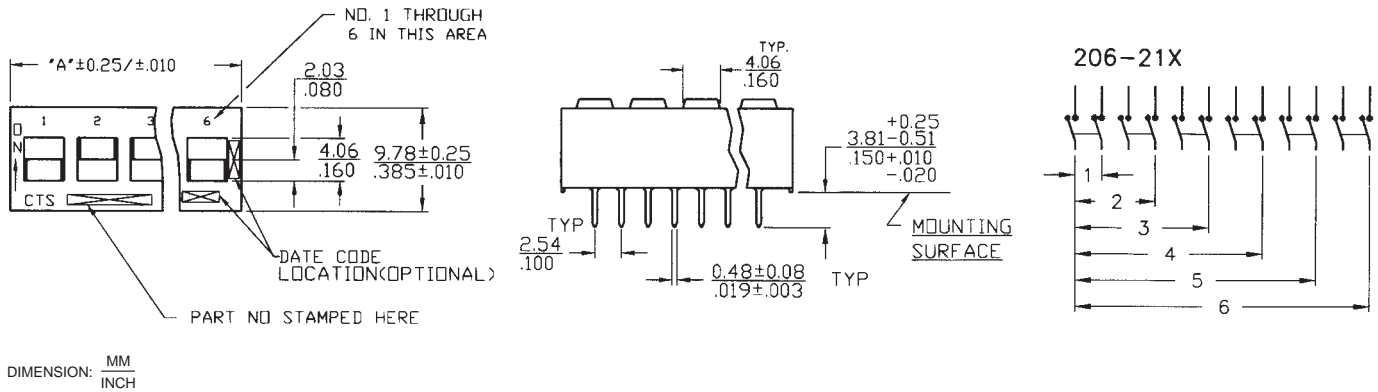
SPST – Series 206 and Series 208



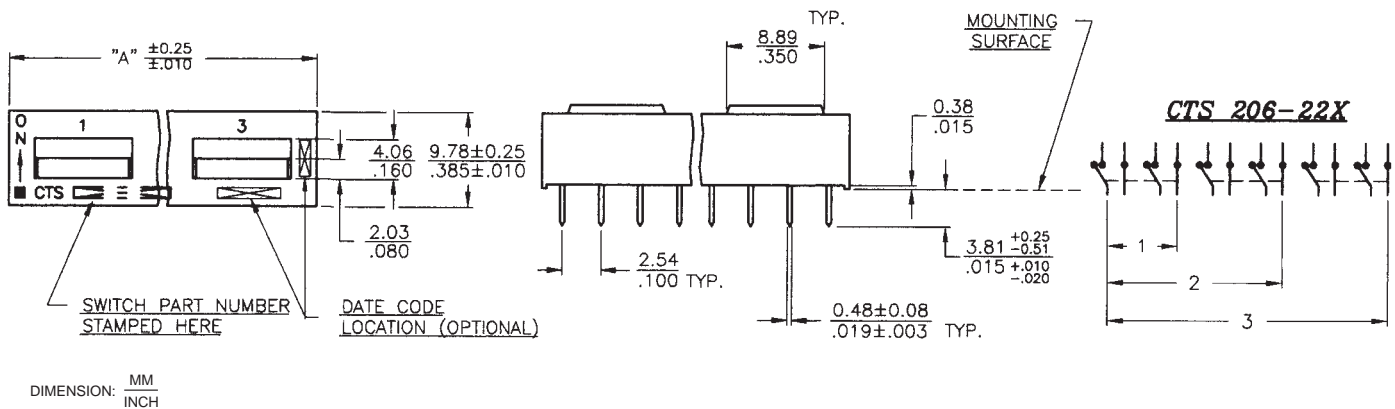
SPDT – Series 206



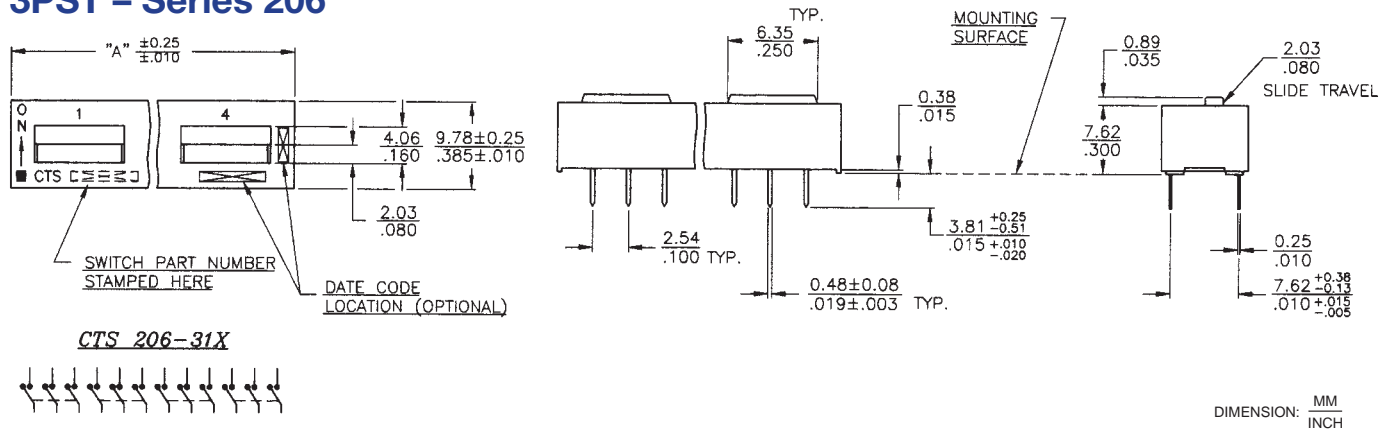
DPST – Series 206



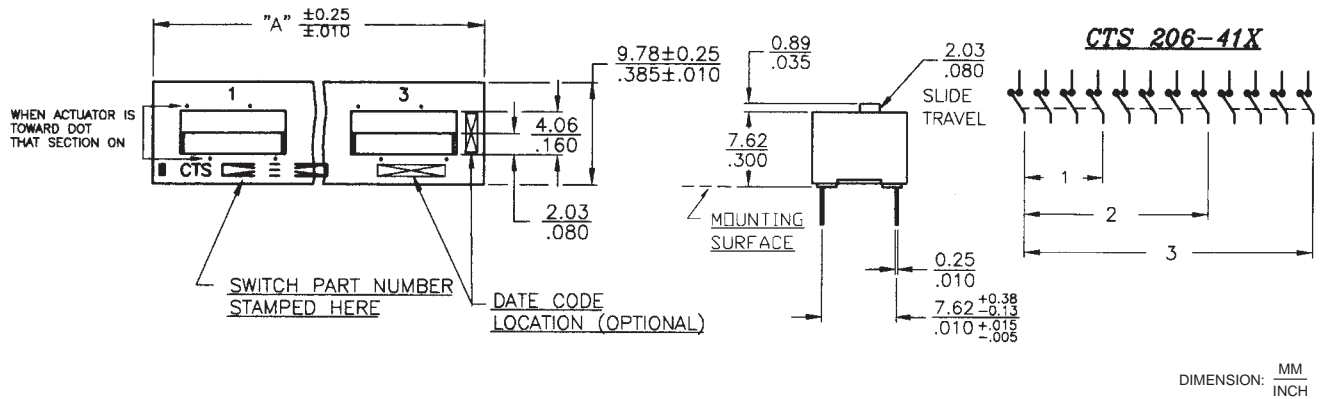
DPDT – Series 206



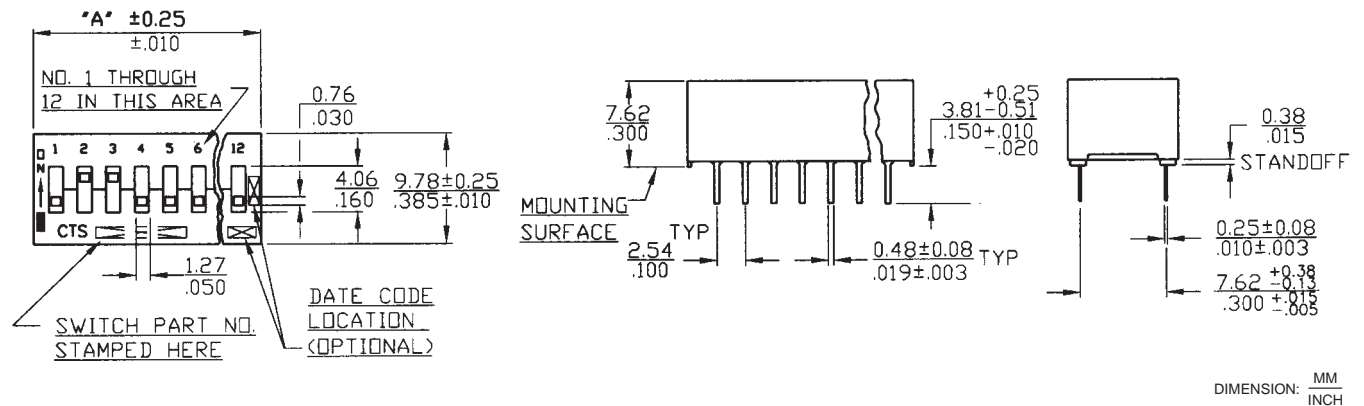
3PST – Series 206



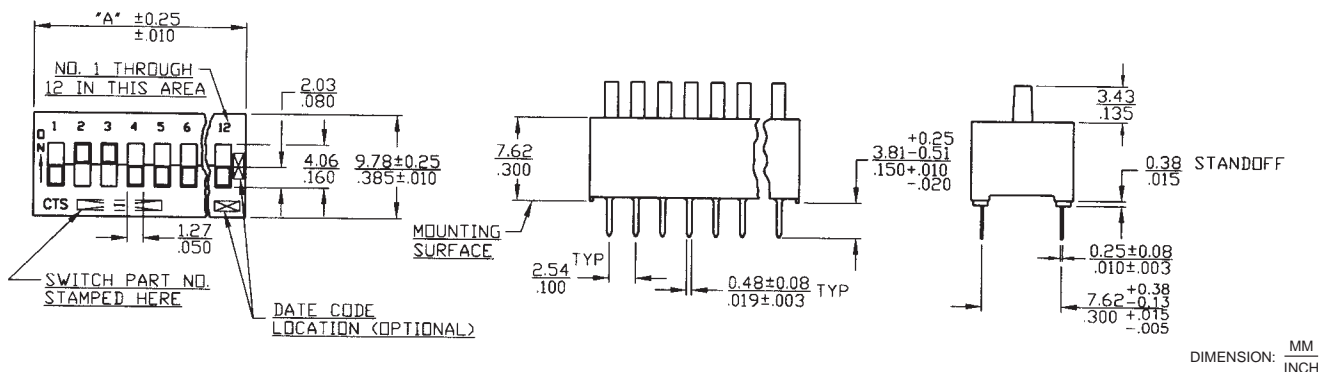
4PST – Series 206



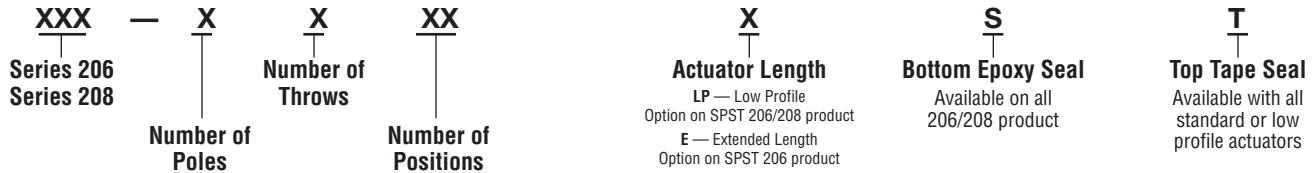
Low Profile Actuators – Series 206 and Series 208, SPST



Extended Actuators – Series 206, SPST



Part Numbering Information



Ordering Information

| "A" Overall Dimensions | Number of Switch Sections | Actuation | Part Number | Both Bottom and Top Sealed | Low Profile Both Bottom and Top Sealed |
|------------------------|---------------------------|-----------|-------------|----------------------------|--|
| 7.26 / .286 | 2 | SPST | 206/208-2 | 206/208-2ST | 206/208-2LPST |
| 9.80 / .386 | 3 | SPST | 206/208-3 | 206/208-3ST | 206/208-3LPST |
| 12.34 / .486 | 4 | SPST | 206/208-4 | 206/208-4ST | 206/208-4LPST |
| 14.88 / .586 | 5 | SPST | 206/208-5 | 206/208-5ST | 206/208-5LPST |
| 17.42 / .686 | 6 | SPST | 206/208-6 | 206/208-6ST | 206/208-6LPST |
| 19.96 / .786 | 7 | SPST | 206/208-7 | 206/208-7ST | 206/208-7LPST |
| 22.50 / .886 | 8 | SPST | 206/208-8 | 206/208-8ST | 206/208-8LPST |
| 25.04 / .986 | 9 | SPST | 206/208-9 | 206/208-9ST | 206/208-9LPST |
| 27.58 / 1.086 | 10 | SPST | 206/208-10 | 206/208-10ST | 206/208-10LPST |
| 32.66 / 1.286 | 12 | SPST | 206/208-12 | 206/208-12ST | 206/208-12LPST |
| 7.26 / .286 | 1 | SPDT | 206-121 | 206-121ST | |
| 12.34 / .486 | 2 | SPDT | 206-122 | 206-122ST | |
| 17.42 / .686 | 3 | SPDT | 206-123 | 206-123ST | |
| 22.50 / .886 | 4 | SPDT | 206-124 | 206-124ST | |
| 27.58 / 1.086 | 5 | SPDT | 206-125 | 206-125ST | |
| 32.66 / 1.286 | 6 | SPDT | 206-126 | 206-126ST | |
| 7.26 / .286 | 1 | DPST | 206-211 | 206-211ST | |
| 12.34 / .486 | 2 | DPST | 206-212 | 206-212ST | |
| 17.42 / .686 | 3 | DPST | 206-213 | 206-213ST | |
| 22.50 / .886 | 4 | DPST | 206-214 | 206-214ST | |
| 27.58 / 1.086 | 5 | DPST | 206-215 | 206-215ST | |
| 32.66 / 1.286 | 6 | DPST | 206-216 | 206-216ST | |
| 12.34 / .486 | 1 | DPDT | 206-221 | 206-221ST | |
| 22.50 / .886 | 2 | DPDT | 206-222 | 206-222ST | |
| 32.66 / 1.286 | 3 | DPDT | 206-223 | 206-223ST | |
| 9.80 / .386 | 1 | 3PST | 206-311 | 206-311ST | |
| 17.42 / .686 | 2 | 3PST | 206-312 | 206-312ST | |
| 25.04 / .986 | 3 | 3PST | 206-313 | 206-313ST | |
| 32.66 / 1.286 | 4 | 3PST | 206-314 | 206-314ST | |
| 12.34 / .486 | 1 | 4PST | 206-411 | 206-411ST | |
| 22.50 / .886 | 2 | 4PST | 206-412 | 206-412ST | |
| 32.66 / 1.286 | 3 | 4PST | 206-413 | 206-413ST | |

Order From:

CTS CORPORATION, ELECTROCOMPONENTS / 1601 Mishawaka Street / Elkhart, Indiana 46514
 North America Toll Free (888) 287-4690 / (219) 296-6700 / FAX: (219) 293-1240 <http://www.ctscorp.com>

CTS COMPONENTS TAIWAN, LTD. / 7, Central 6th Road (Chung Liu Road) / P.O. Box 26-20
 Kaohsiung Export Processing Zone / Kaohsiung, Taiwan, Rep. of China
 (07) 8216145 / FAX: (07) 8417642.8110040